



Alexia Systems Limited

ASL-01
Data Sheet

Ultra Compact Reeling Drum
Angle and Anti-Two Facility

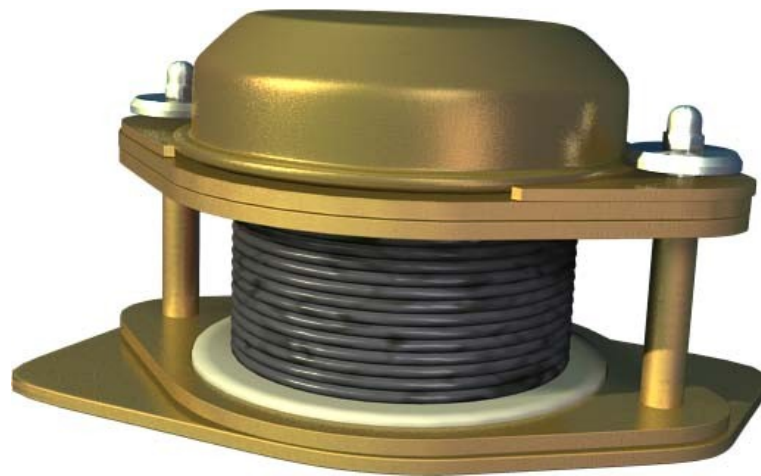
Table of Contents

Overview.....	3
Technical Specifications.....	4
Wiring Diagram.....	5
Contact Information.....	6

Overview

The ASL-01 is the smallest of our range of reeling drums that we supply. It can be fully featured with an angle sensor and anti-two block switching facility. With its very small weight and size, these drums can effortlessly be fitted to any small crane.

The drum is built with a Zinc Yellow-Passivated steel body with a tough nylon periphery to ensure many years of corrosion resistance.



Technical Specifications

Dimensions:

Height	120mm
Width	180mm
Length	135mm
Weight	3.5Kg
Reeling Length	7m

Angle Sensor / Length Sensor:

Input Voltage	12-24V DC
Power Consumption	4-20mA
Output	1-6V DC

Wiring Diagram

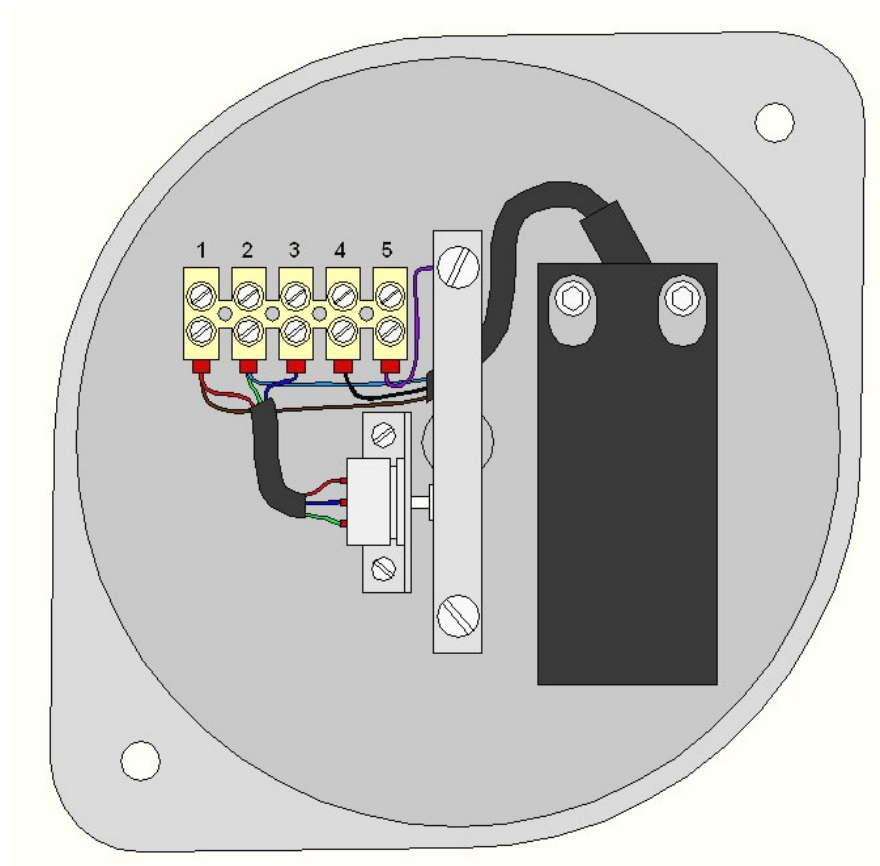
The potentiometer which reads the length has three wires:

- Red – Power +V
- Blue – Signal
- Green – Ground 0V

The angle sensor has three wires

- Brown – Power +V
- Black – Signal
- Blue – Ground 0

Both the angle sensor and potentiometer share 'Power +V' on pin 1, and 'Ground 0' on pin 2. Signal for the potentiometer is on pin 3, and Signal for the angle sensor is pin 4. Pin 5 is the signal for the Anti-Two block function.



Contact Information

The information displayed in this data sheet has been written to the highest standard possible. While we have tried our best to make sure the information is as accurate and as descriptive as possible.

If there is information that you think may be omitted or inaccurate, then feel free to contact us regarding any information on this product.

United Kingdom

Alexia Systems Limited
Unit 10 Buckley Road Industrial Estate
Rochdale
OL12 9EF
Lancashire

Tel: +44-1706-860-905

Fax: +44-1706-647-169

<http://www.alexiasystems.co.uk/>